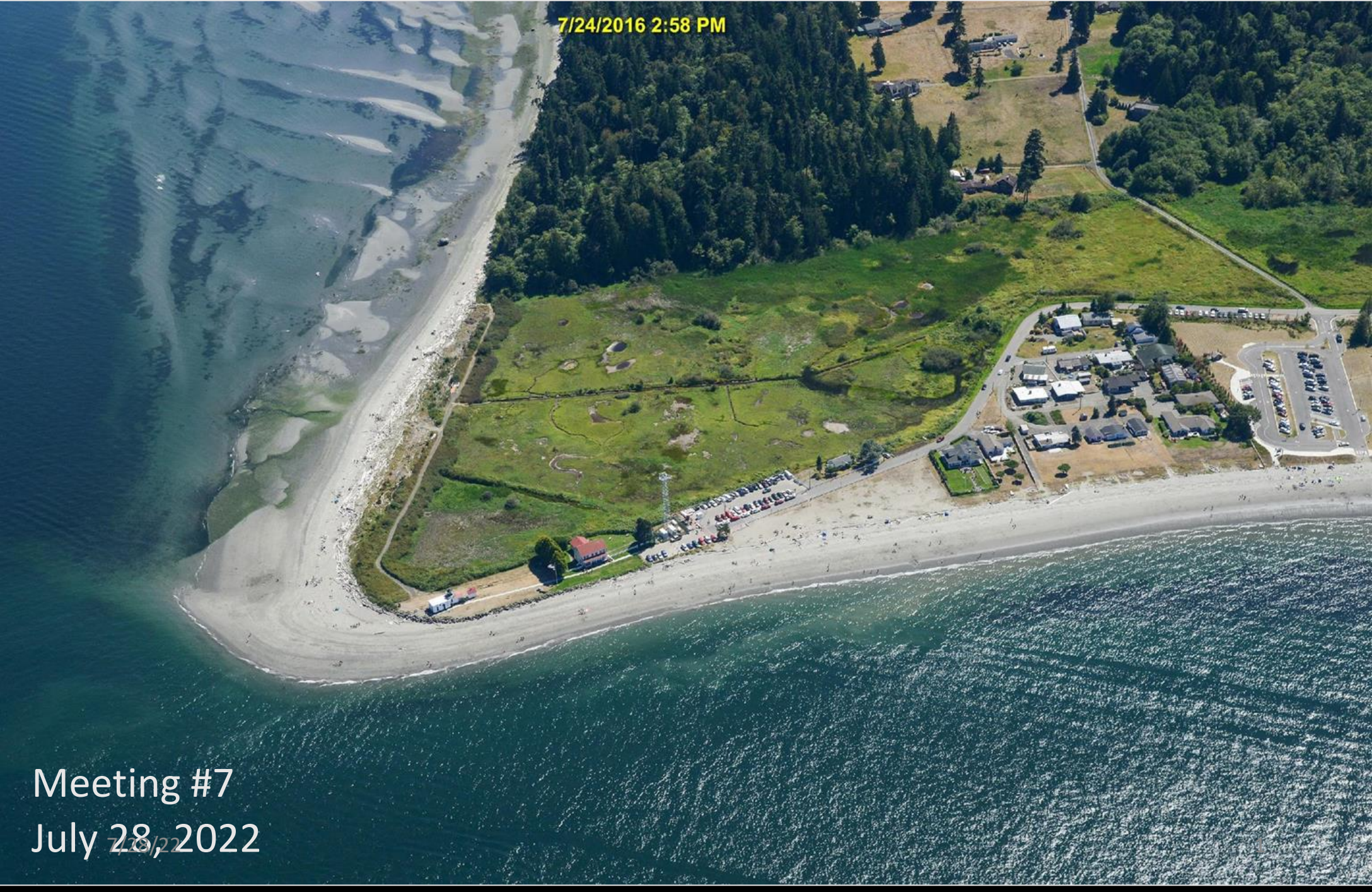


# Point No Point Community Meeting



7/24/2016 2:58 PM

Meeting #7  
July 28, 2022

7/28/22

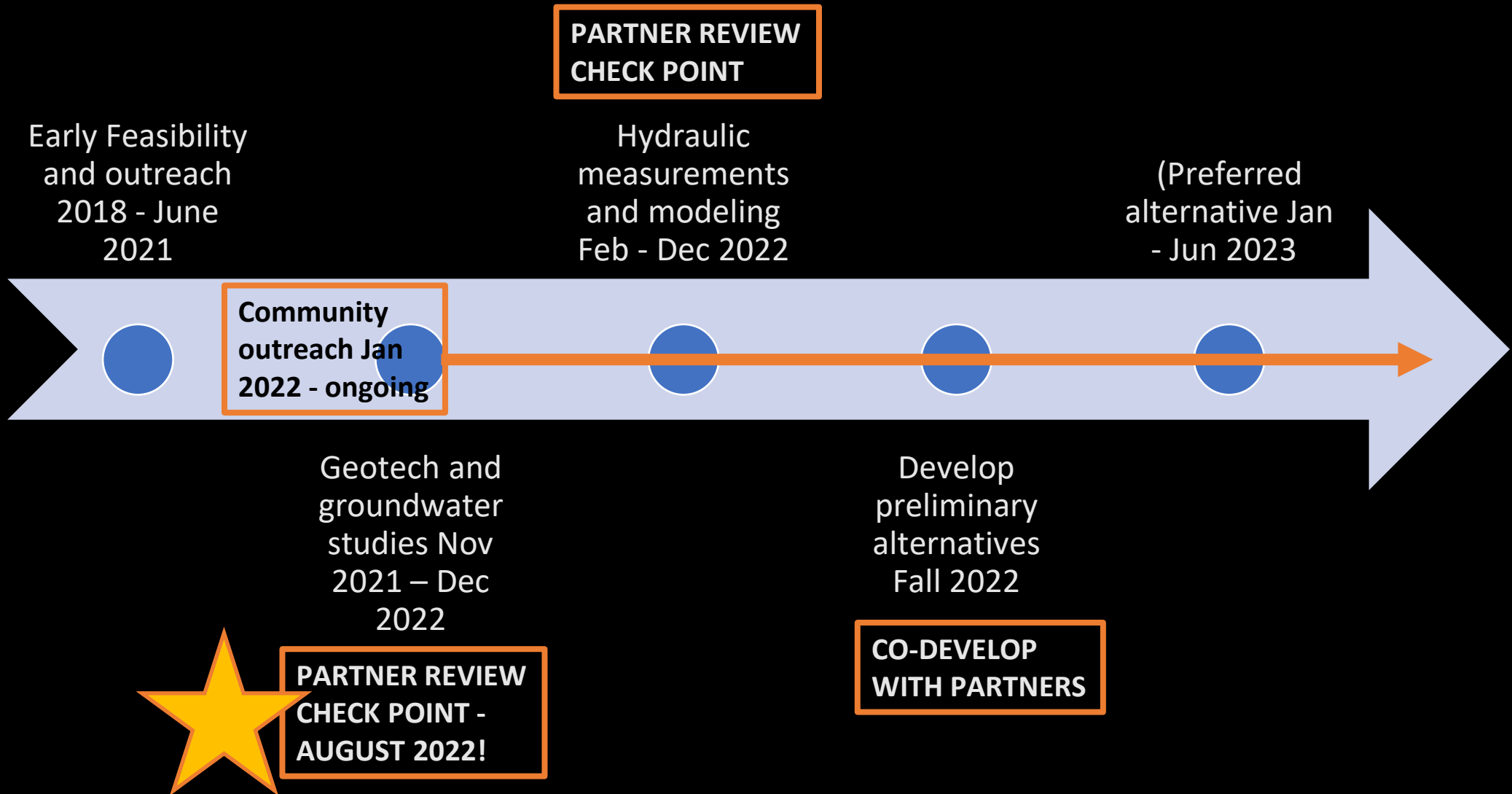
## Meeting Agenda

- 5:00 – 5:20 Welcome, agenda, goals, introductions
- 5:20 – 5:30 Review project timeline
- 5:30 – 5:35 Engineer's update
- 5:35 – 6:05 Kathy Peters – *Fishing for Habitat* + Q&A
- 6:05 – 6:20 Community Action
- 6:20 – 6:30 Wrap-up and Adjourn

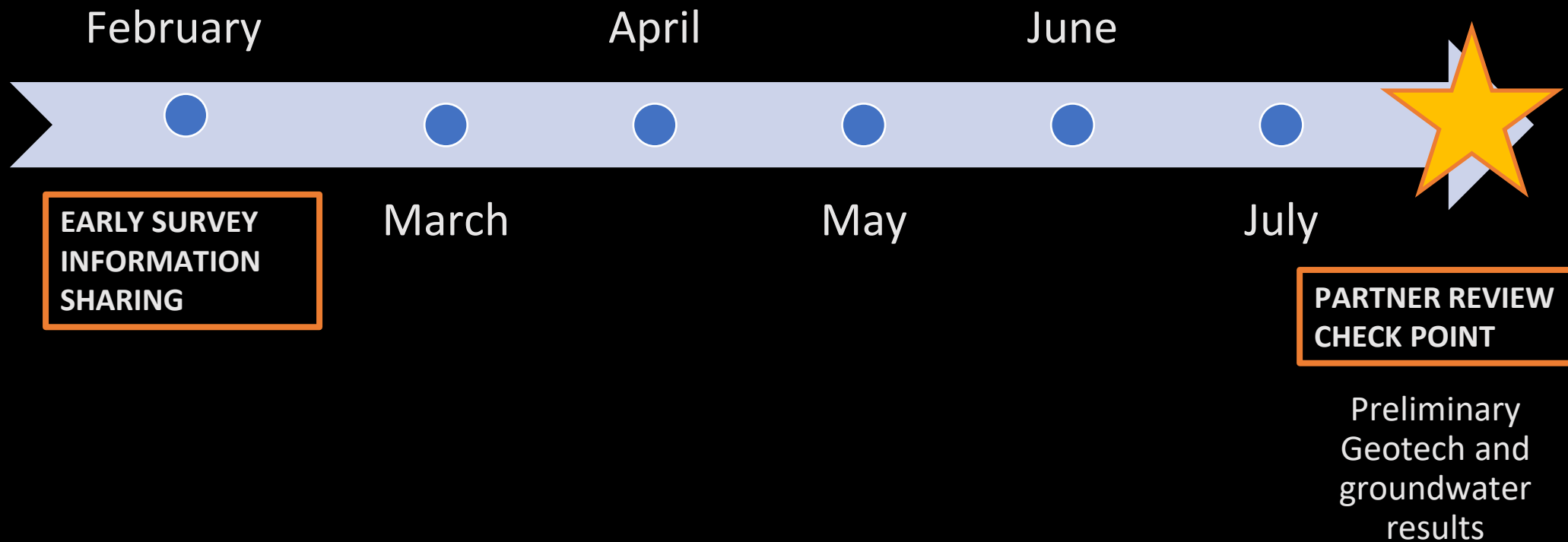
# Meeting goals

- To provide opportunity for discussion with park neighbors and community members;
- To share information about upcoming opportunities to participate;
- To gather feedback on additional ways that *you* would like to engage with us at PNP.

# Project timeline



# Project timeline: near-term







# SAVE THE DATE



**Thursday, August 25th**  
**AFTERNOON SESSION : 3-4:30pm**  
**EVENING SESSION : 6-7:30pm**

**Review groundwater and surface water data**

**Q & A and next steps discussion**

**Hybrid meeting format**

*Look for an email reminder to RSVP or visit Mid Sound Fisheries website!*

Engineer's update [stop slide show]



# Project area

NE Point No Point Rd

Parking Area

Lighthouse

Trail/ Berm

Drainage ditches

23-acre Freshwater Wetland

Hillview Lane

10-acre Freshwater Wetland

Privately Owned

12-inch culvert

Point No Point Park

Tide Gate

18-inch Outfall

2 mi. of feeder bluffs

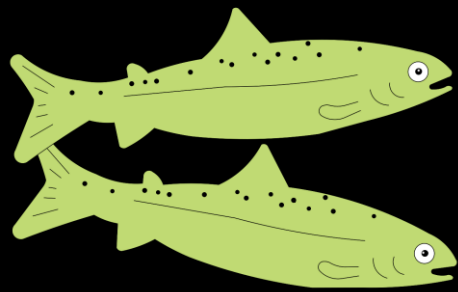
# Visual Scope of Work



## POINT NO POINT WETLAND RESTORATION Conceptual Plan



# Kathy Peters – *Fishing for Habitat*



## Landscape Functions

## Central Puget Sound & Port Madison/Sinclair Inlet

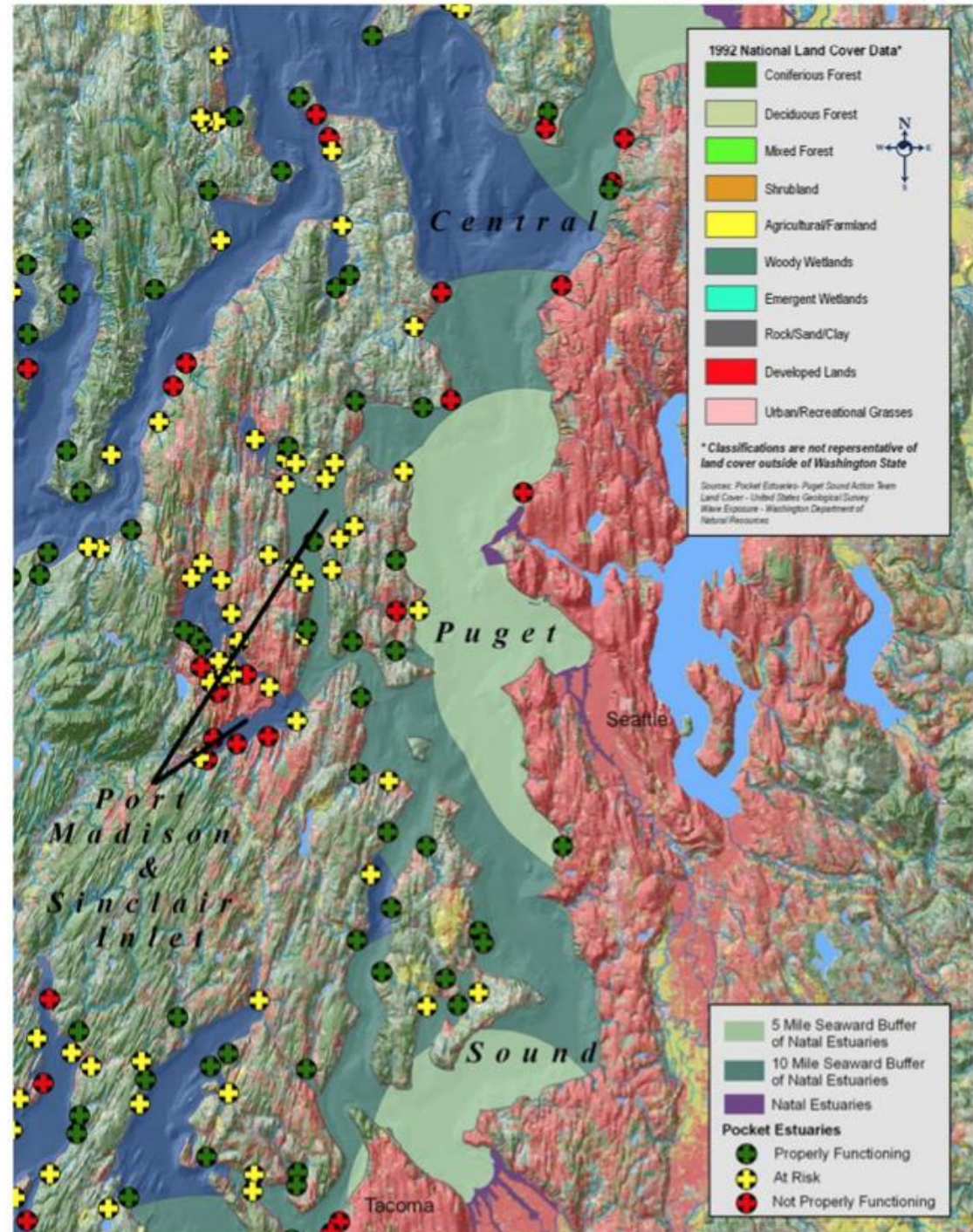


Figure E-8.2 Port Madison/Sinclair and Main Basin Landscape Functions

# Come join us this summer!



Photo

**We need your eyes & ears!**

## **FOURTH FRIDAY FISHING FOR ANSWERS**

***Meet at the Point No Point Lighthouse  
at 9am***

**July 29th\*** - *Focus on fish*

**Aug 26th** - Stream health & the human connection

**Sept 23rd** – the estuary food web in honor of National Estuary Week!

# How would *you* like to participate?



Are you drawn to  
the water?  
the life around  
and the life within?

Counting catch of the day  
at the beach, or fish  
presence in the marsh



Monitoring  
vegetation along  
the marsh channel



Testing water  
quality

There are birds, plants,  
and wildlife to monitor



And later on, we will plant...

*Where would you like to join us?*





When we have opportunities to learn more about the Estuary, and ways to actively protect it...

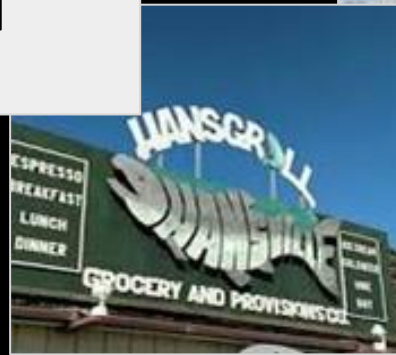


**Community Action can happen in the place that we love**



**We can have a picnic, or a night on the town**

**Or while supporting a locally-owned business**



*Thank you for joining us!*

Next meeting: Thursday, July 28<sup>th</sup>



# Project area

NE Point No Point Rd

Parking Area

Lighthouse

Trail/ Berm

Drainage ditches

23-acre Freshwater Wetland

Hillview Lane

10-acre Freshwater Wetland

Privately Owned

12-inch culvert

Point No Point Park

Tide Gate

18-inch Outfall

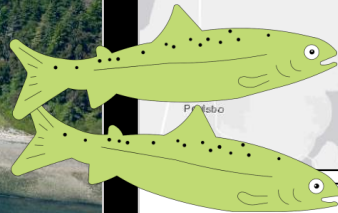
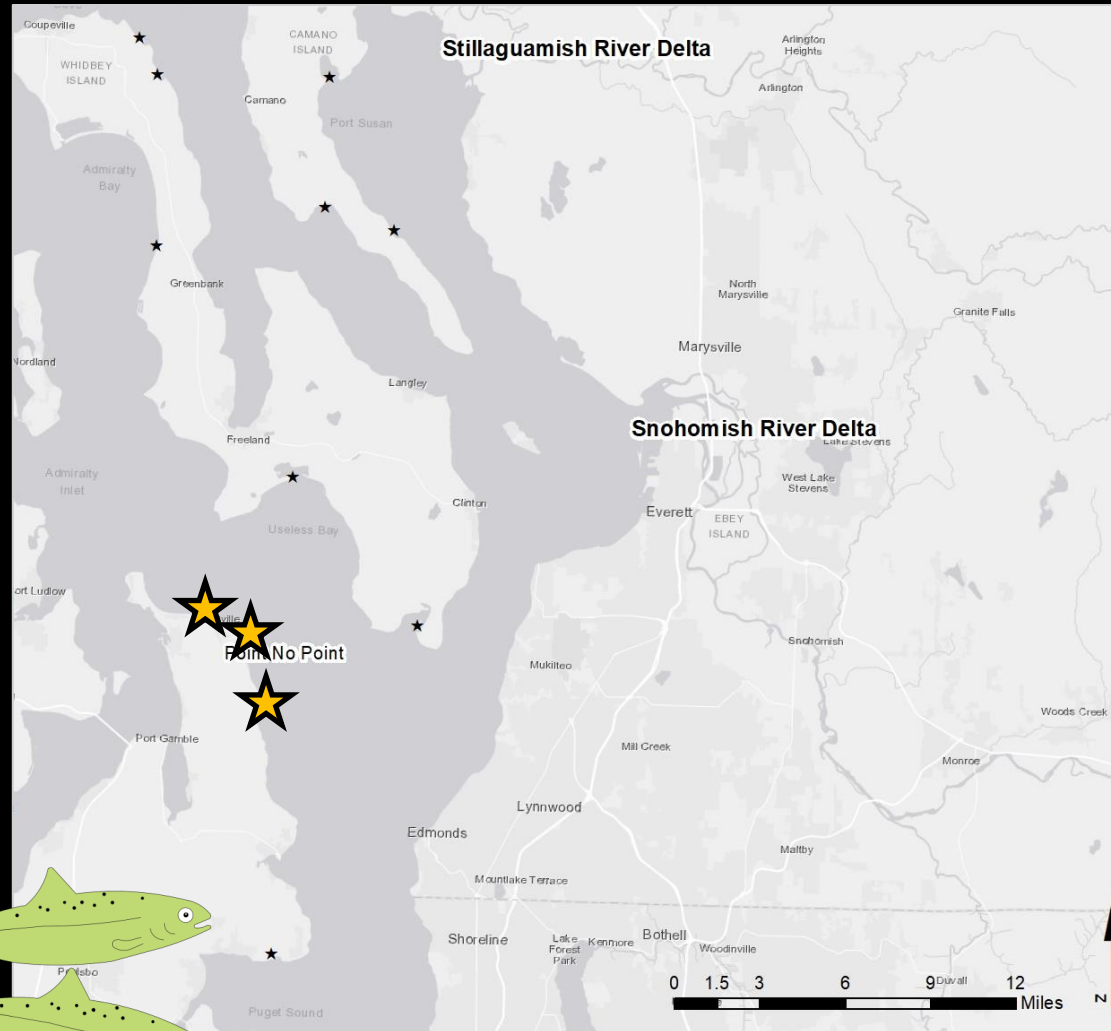
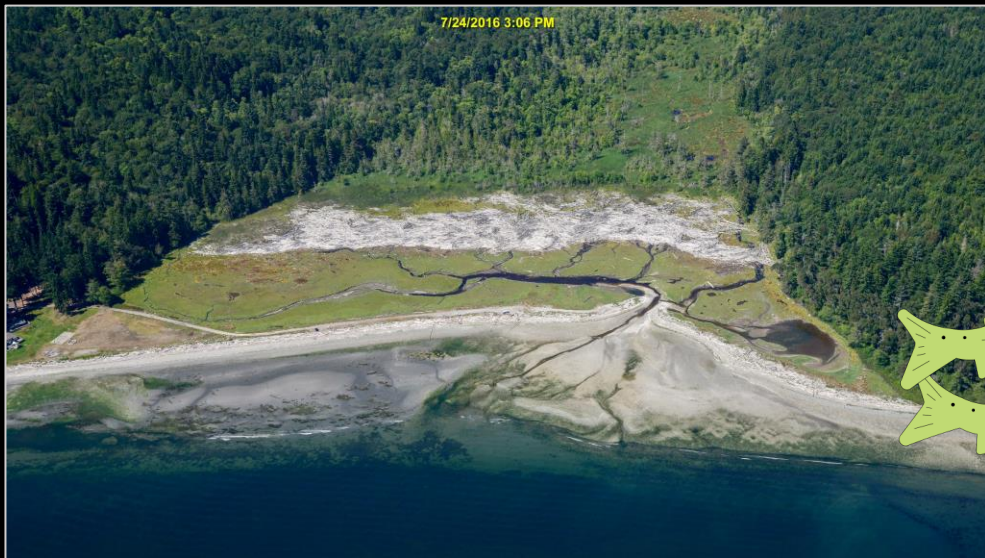
2 mi. of feeder bluffs

# Visual Scope of Work



## POINT NO POINT WETLAND RESTORATION Conceptual Plan

# Regional significance



★ Fish Accessible Barrier Embayments

**Notes:**

Additional estuaries may be accessible to fish that are not represented in this map.