

7/24/2016 2:58 PM

Point No Point Community Meeting

Meeting # 1
February 9, 2023



Meeting agenda

5:00 – 5:15 Welcome, Who's here tonight, Goals

5:15 – 5:25 Emergency Response Update from Parks & Public Works

5:25 – 5:35 Finding Info for the County / FAQ's for Estuary Restoration

5:35 – 6:00 King Tides & the Estuary Restoration Project

6:00 – 6:20 Questions from the Community

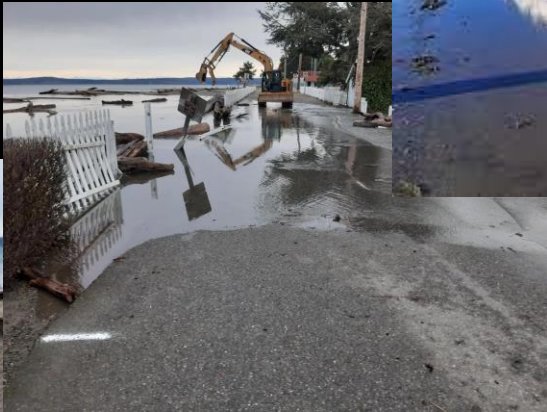
6:20 – 6:25 What's coming this month?

Meeting goals

- Review Where We Are
- Review Frequently Asked Questions
- Review upcoming opportunities to participate



Emergency Response



**KING
TIDE
EVENT
DEC 27**



Google: *Point No Point Park*

- *Click for Updates*

<https://www.kitsapdem.com/kc-coastal-flooding/>



Google: *Mid Sound Fisheries*

- *Click on Picture of PNP*
- *Scroll Down for FAQ's*
- *Look to the panel on R for past Meetings*
- *Use drop-down menu for Engage / events*



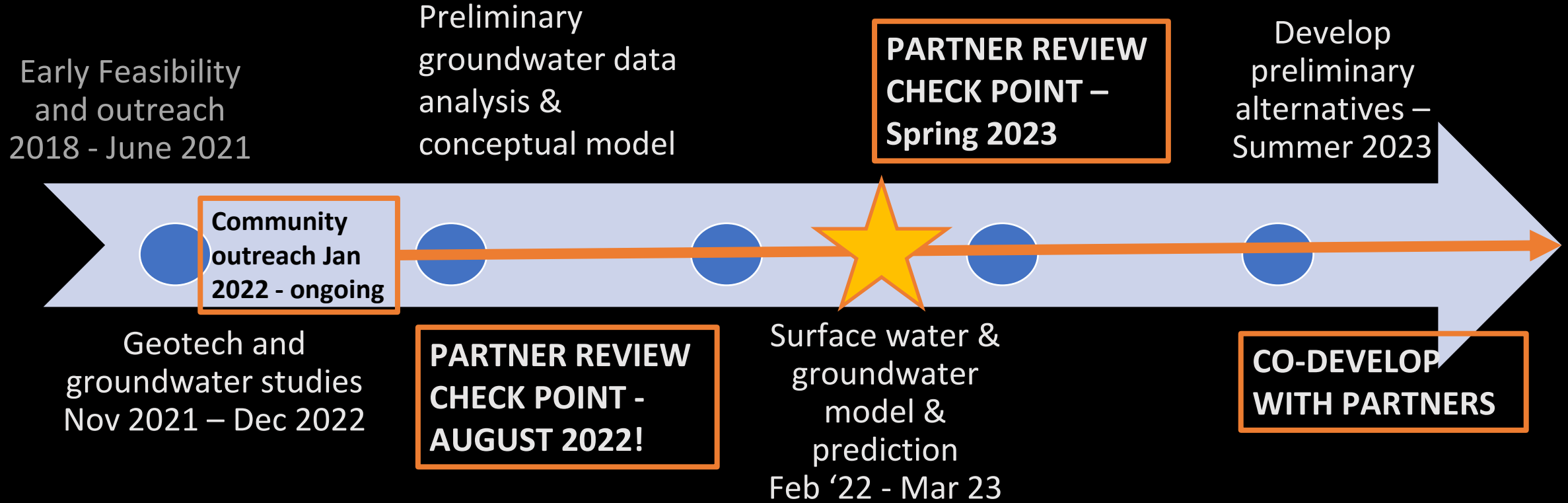
STAGES of PROJECT

- Feasibility
- Preliminary Design
- Final Design
- Permitting
- Construction





Preliminary Design





JESSICA COTE
BLUE COAST ENGINEERING

KING TIDES

&

the ESTUARY RESTORATION PROJECT



Next Meeting



To be Announced in early March

Follow up on any remaining Q & A from past meetings

Jessica Cote, Existing Conditions Groundwater Model

Look for an email invitation to RSVP or visit Mid Sound Fisheries website!



2nd Monday Tea & Tides

We meet on the 4th Friday for a walk in the woods at Point No Point... it's a nice time for us to check in with the community. If you have observations or questions to bring to the community's attention, and you're either not a morning person, not a big walker, or you work during the day, we have another time set aside on 2nd Mondays. Due to the darkness, we will meet at the Hansgrill for tea. Once the days are longer, we will return to Buck Lake.

Join us:

Monday, February 13th from 4:30-5:30

If you missed the last meeting, or just want to learn more, come have some hot tea & we'll chat.

(Please arrive by 5pm, or text 206-226-2548 for late arrival)

4th Friday Fishing for Answers

Meet at the Point No Point **South Parking Lot, on the corner of Thors Rd & Loki Bluff at 9am** to walk through the woods & view the project from the overlook.

FRIDAY, Feb 24th – 9-10am

Our monthly walk & talk will meet here until the County re-opens Point No Point Park.

Bring your camera to help document our work.



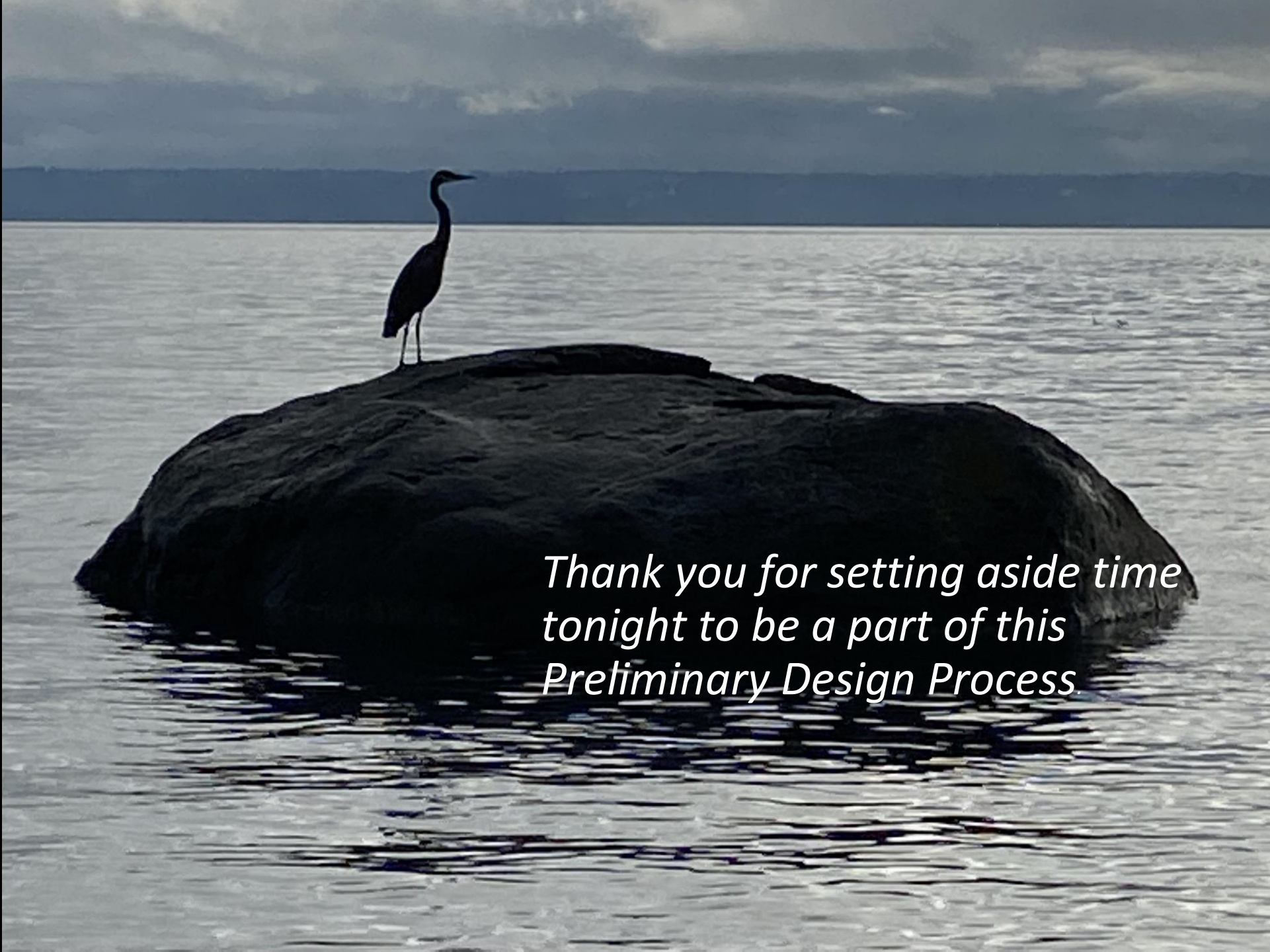
Estuary Restoration Shorts:

2:02 - ESRP (Funding for PNP)

2:05 - Smith Island Tide Returns
(2018 in Snohomish County to the E)

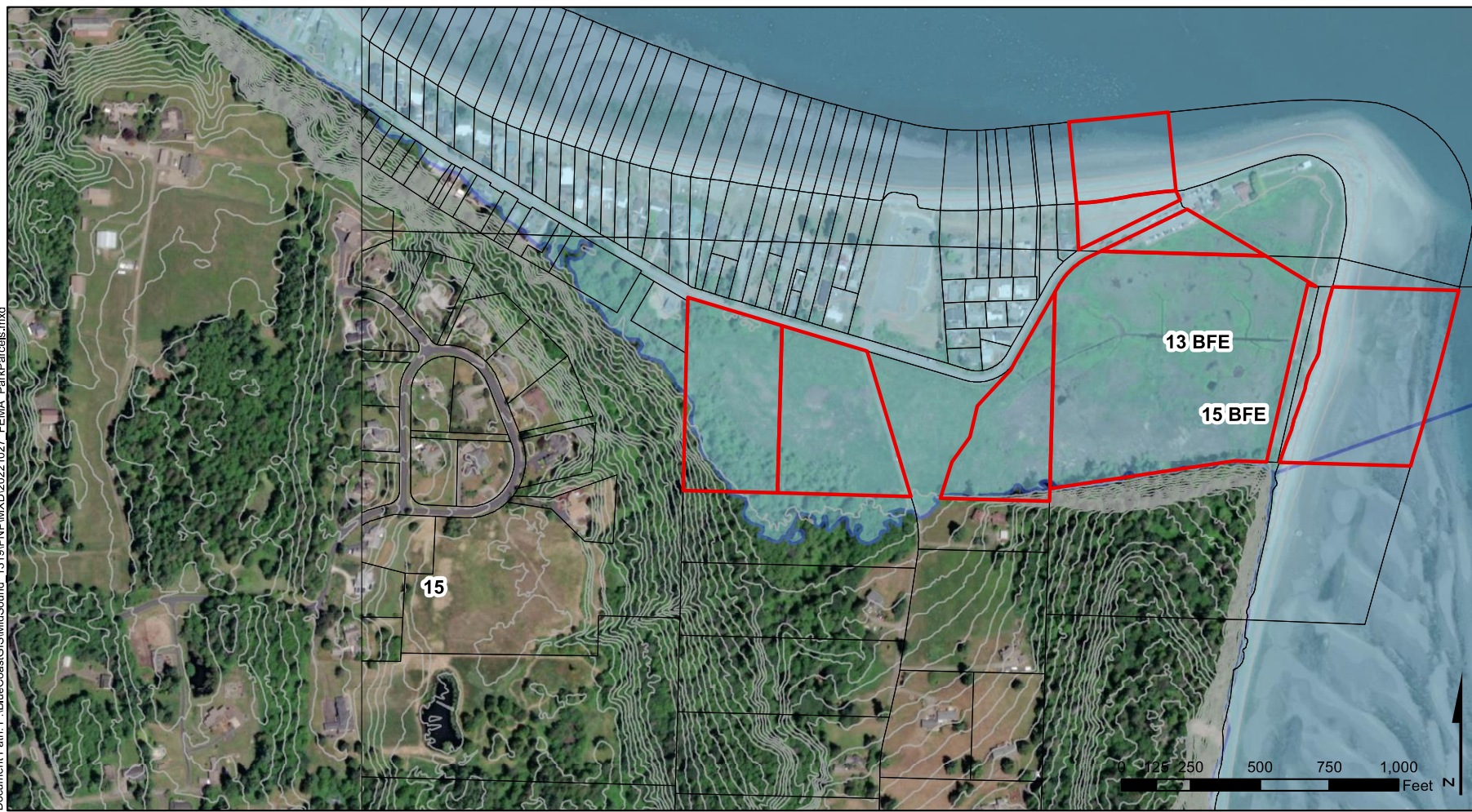
6:26 Duckabush Estuary Restoration plans
(to the South)





2:28 - Willapa Bay Estuary Restoration
(2009: near Long Beach to the SW)



*Thank you for setting aside time
tonight to be a part of this
Preliminary Design Process.*

Document Path: P:\BlueCoastGIS\MidSound - 1319\PNP\MXD\2022\1027_FEMA_ParkParcels.mxd



-  Park Owned Parcels
-  Property Parcels
-  Elevation Contours (5ft NAVD88)
-  FEMA FloodZone with Base Flood Elevation (BFE)

Notes:

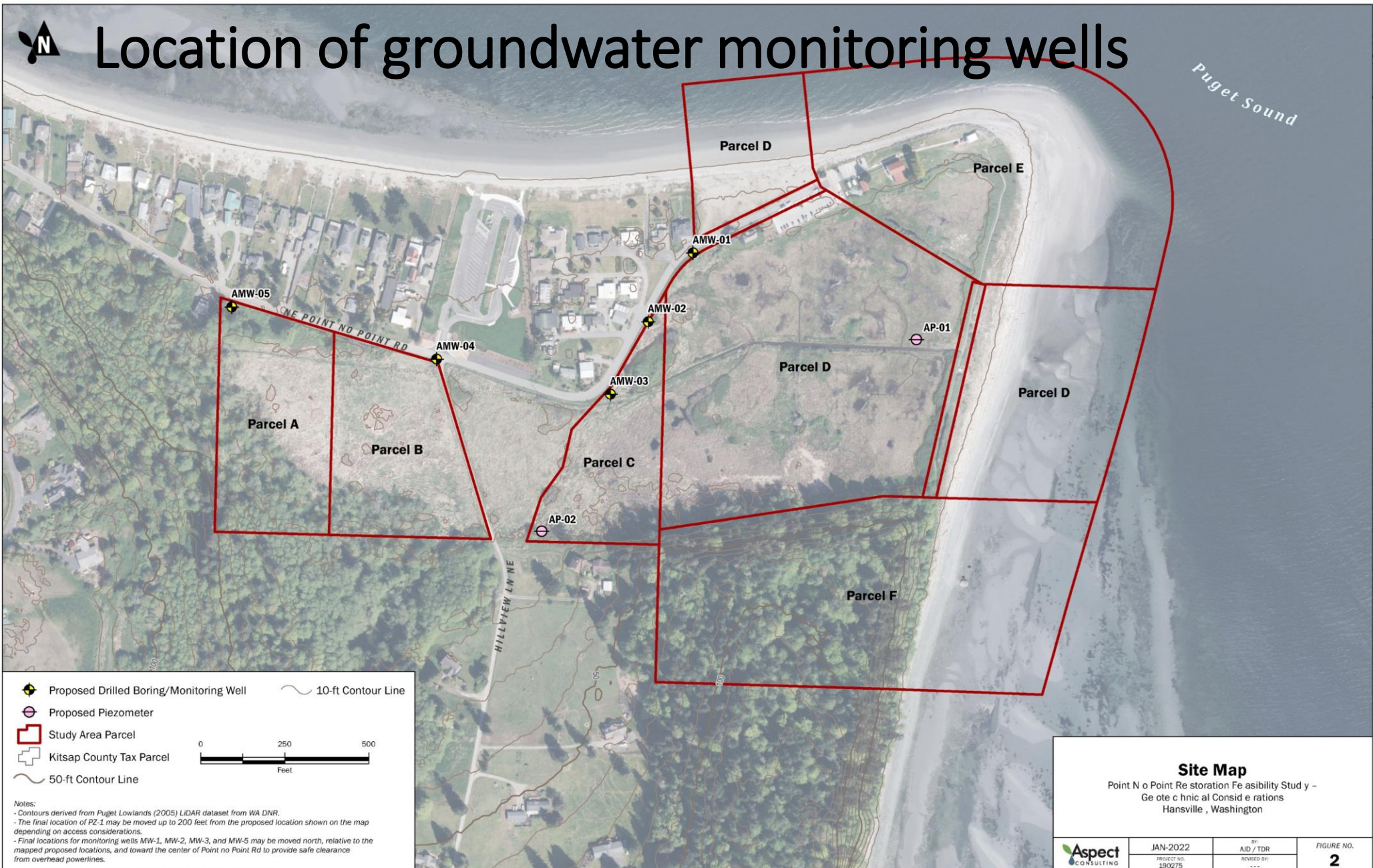
Elevation Contours - Kitsap LiDAR 2018
Property Parcels - Ecology 2019

FEMA Flood Mapping Effective 2/3/2017
BFE (ft NAVD88)

<https://msc.fema.gov/portal/home>



Location of groundwater monitoring wells



Proposed Drilled Boring/Monitoring Well 10-ft Contour Line
 Proposed Piezometer
 Study Area Parcel
 Kitsap County Tax Parcel
 50-ft Contour Line

0 250 500
 Feet

Notes:
 - Contours derived from Puget Lowlands (2005) LIDAR dataset from WA DNR.
 - The final location of PZ-1 may be moved up to 200 feet from the proposed location shown on the map depending on access considerations.
 - Final locations for monitoring wells MW-1, MW-2, MW-3, and MW-5 may be moved north, relative to the mapped proposed locations, and toward the center of Point no Point Rd to provide safe clearance from overhead powerlines.

Site Map		
Point No Point Restoration Feasibility Study - Geotechnical Considerations Hansville, Washington		
	JAN 2022	By: AID / TDR
PROJECT NO. 190275	REVISIONS: ---	FIGURE NO. 2

Project area



NE Point No Point Rd

Parking Area

Lighthouse

Trail/ Berm

Drainage ditches

23-acre Freshwater Wetland

Hillview Lane

10-acre Freshwater Wetland

Privately Owned

12-inch culvert

Point No Point Park

Tide Gate

18-inch Outfall

2 mi. of feeder bluffs

Visual Scope of Work (concept sketch)

